

## Menage Lighting

Installation : Menage

Project number : APH2004

Customer : Solar Tech

Processed by : Adrian Hoe

Date : 05.03.2018

**Project description:**

The lighting has been achieved using the Solar Tec Arena lantern mounted at 5m with a 30 deg tilt,

5 fittings have been mounted along each long side of the area.

The following values are based on exact calculations on calibrated lamps, luminaires and their arrangement. In practice, gradual divergences can occur.

Guarantee claims for luminaire data are excluded.

Relux and the luminaire manufacturers accept no liability for consequential damage and damage which is occasioned to the user or to third parties.

Object : Menage Lighting  
Installation : Menage  
Project number : APH2004  
Date : 05.03.2018

# 1 Luminaire data

## 1.2 Solar Tec int.Ltd, Arena Light (!AL1)

### 1.2.1 Data sheet

---

**Manufacturer: Solar Tec int.Ltd**

#### **!AL1      Arena Light**

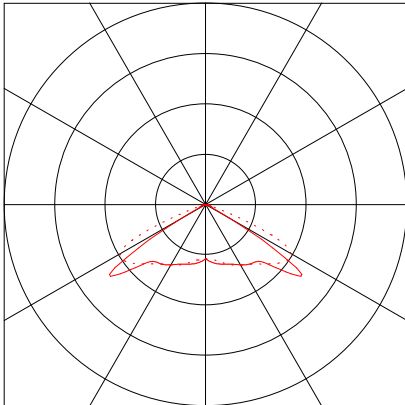
##### **Luminaire data**

Luminaire efficiency : 146.2%  
Luminaire efficacy :  
Classification : A30 ↓100.0% ↑0.0%  
CIE Flux Codes : 31 75 99 100 147  
UGR 4H 8H : 63.0 / 65.6  
Luminous flux : 1462 lm

##### **Equipped with**

Quantity : 1  
Designation :  
Colour :  
Luminous flux : 1000 lm

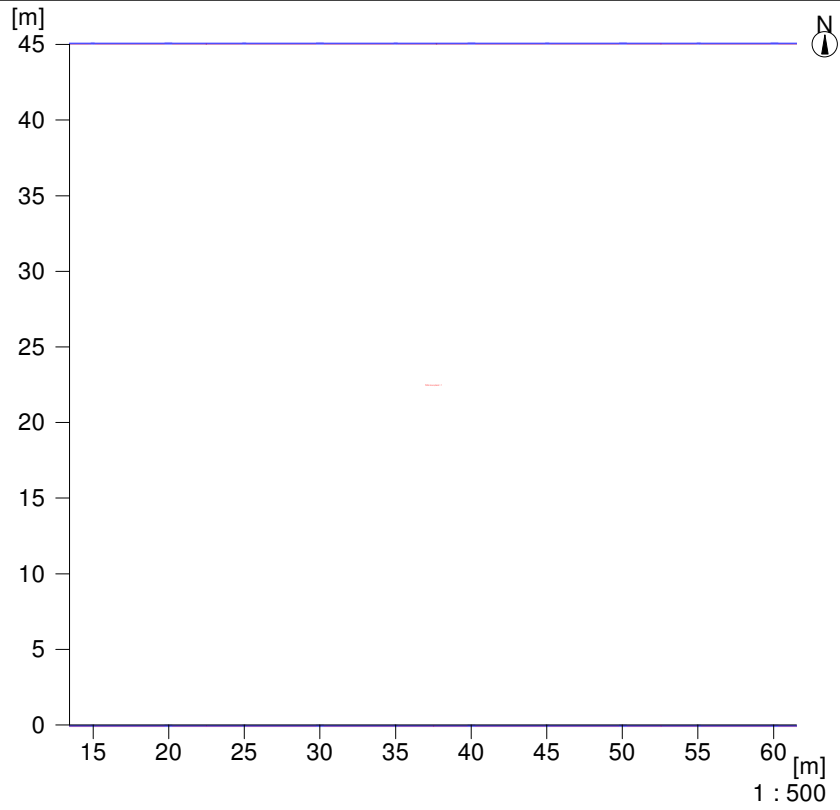
Dimensions : Ø1 mm x 1 mm



## 2 Exterior 1

### 2.1 Description, Exterior 1

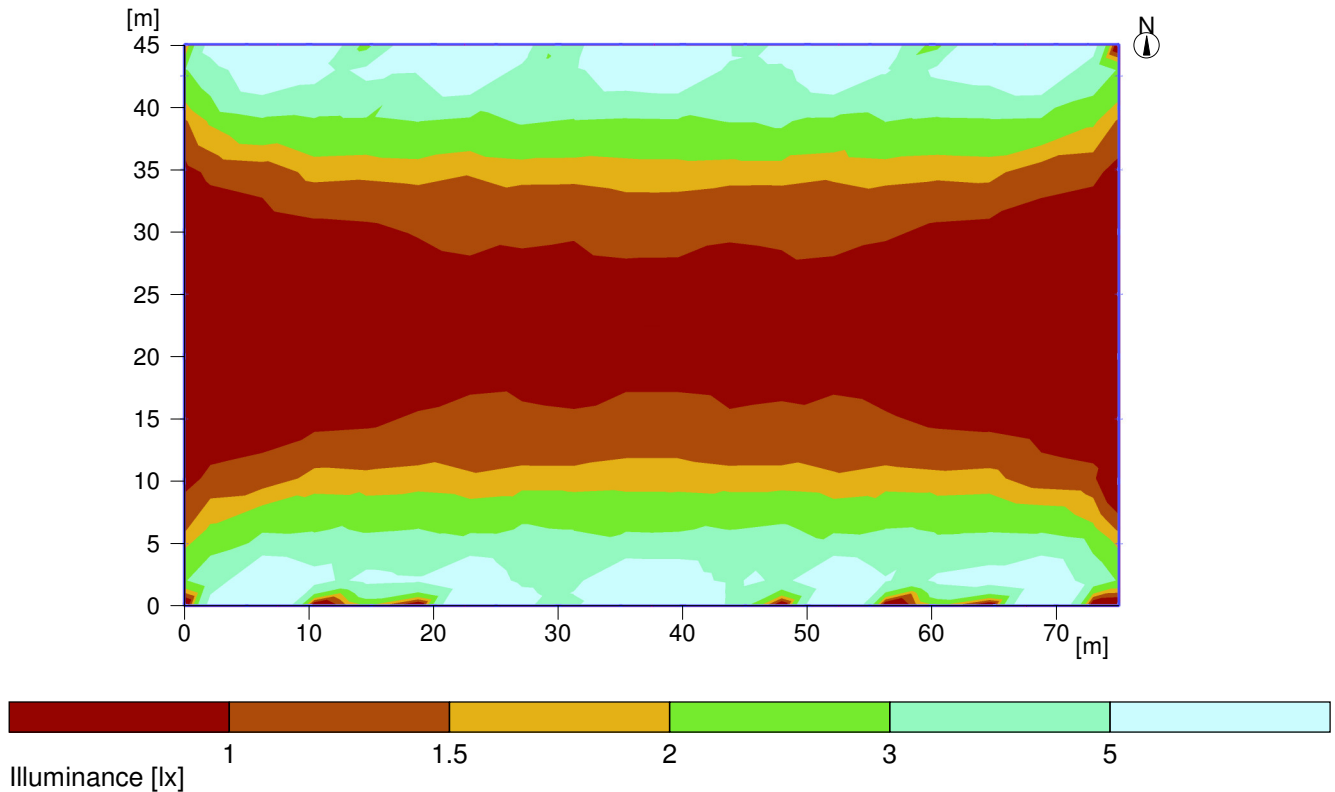
#### 2.1.1 Floor plan



## 2 Exterior 1

### 2.2 Summary, Exterior 1

#### 2.2.1 Result overview, Evaluation area 1



#### General


Calculation algorithm used photometric centre height. Maintenance factor	Average indirect fraction 5.00 m 0.90
Total luminous flux of all lamps	10000 lm

#### Evaluation area 1

#### Reference plane 1.1

	Horizontal
Em	2.09 lx
Emin	0.52 lx
Emin/Eav (Uo)	0.25
Emin/Emax (Ud)	0.08
Position	0.00 m

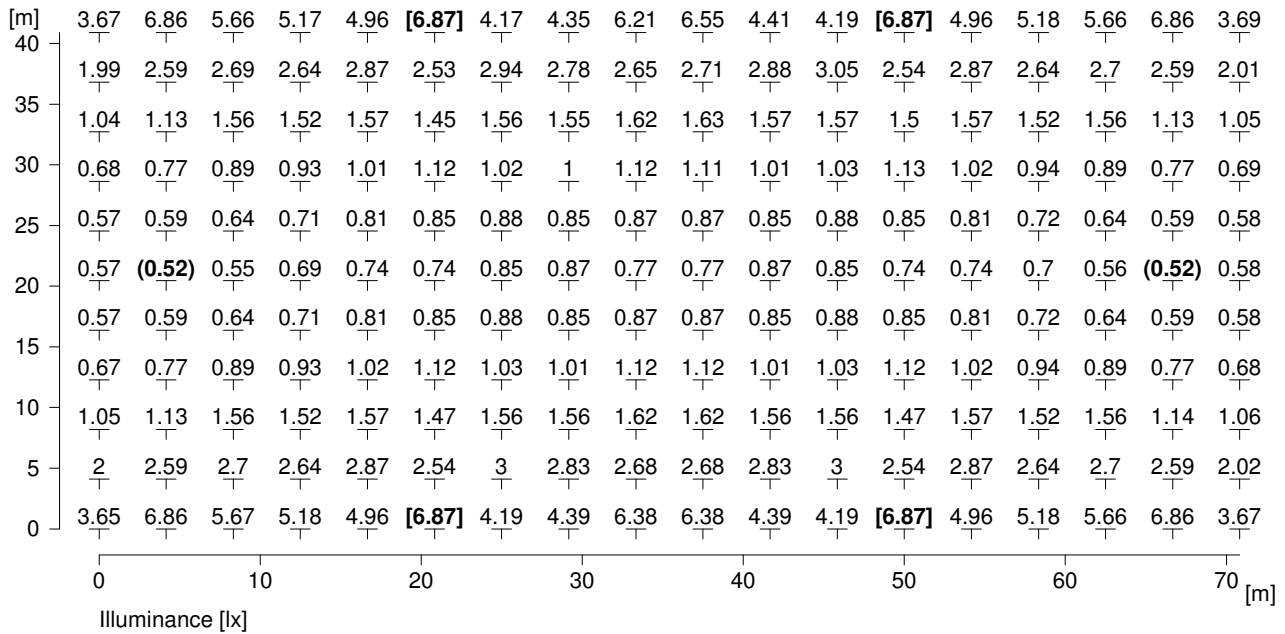
#### Type No.\Make

2	10	<b>Solar Tec int.Ltd</b>
		Order No. : IAL1
		Luminaire name : Arena Light
		Equipment : 1 x / 1000 lm

## 2 Exterior 1

### 2.3 Calculation results, Exterior 1

#### 2.3.1 Table, Reference plane 1.1 (E)



Height of the reference plane

	: 0.00 m
Average illuminance	Eav : 2.09 lx
Minimum illuminance	Emin : 0.52 lx
Maximum illuminance	Emax : 6.87 lx
Uniformity U <sub>o</sub>	Emin/Eav : 1 : 4.01 (0.25)
Diversity U <sub>d</sub>	Emin/Emax : 1 : 13.18 (0.08)

## 2.3 Calculation results, Exterior 1

### 2.3.2 3D pseudo colours, View 1 (E)

